

Mastering Managed Application offers

Metered billing technical details

A Mastering the Marketplace video

<https://aka.ms/MasteringTheMarketplace>

Overview

Direct reporting

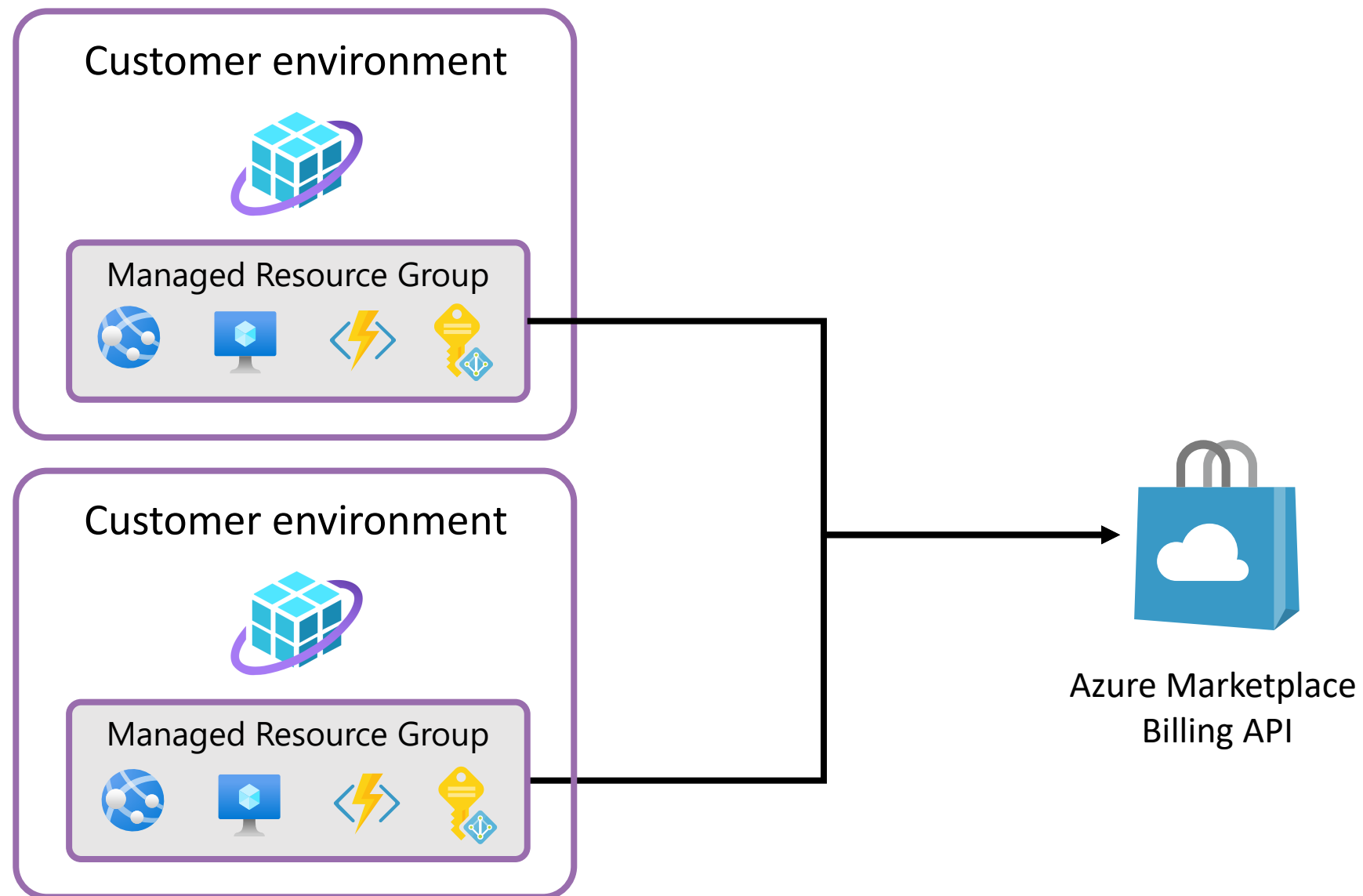
Centralized reporting

Working with the metered
billing API



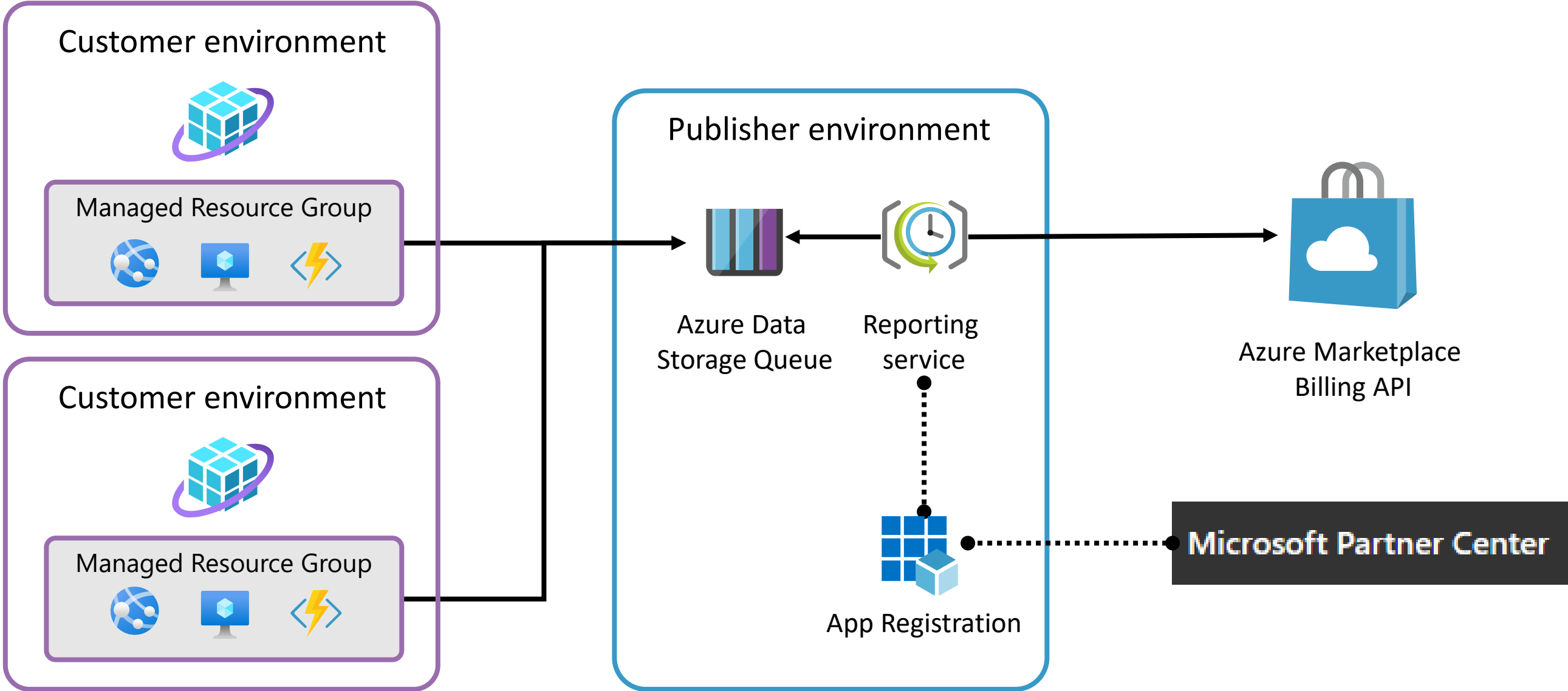
Direct reporting

Direct reporting architecture



Centralized reporting

Central reporting architecture



Partner Center configuration

Technical configuration

Published

Complete this section with the identity of your service only if all of the following apply:

- Your offer includes a managed application plan that will emit metering events using the [Marketplace Metering](#)
- Your offer will emit metering events from an authenticated central service that you will host (rather than emitti

[Learn more](#)

Azure Active Directory tenant ID ⓘ

For example, 50c464d3-4930-494c-963c-1e951d15360e

Azure Active Directory application ID ⓘ

For example, 50c464d3-4930-494c-963c-1e951d15360e

Save draft **Review and publish**

Offer ID: msalemdummymanagedoffer

Working with the metered billing API

Metered billing API calls

Single usage event

Submit usage for a single event

Submit with:

- Subscription
- Plan ID
- Dimension ID
- Quantity

Batch usage event

Submit usage for multiple subscriptions and dimensions

Max events to report is 25

Retrieve usage events

See event usages posted during a specific time frame

See the result status of each call at the time it was made

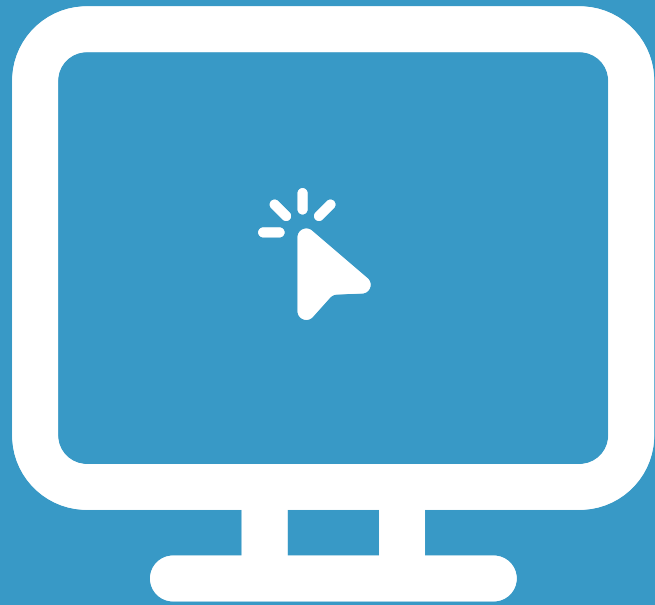
Single dimension API POST payload

```
{  
  "effectiveStartTime": "{utcTime}",  
  "quantity": {quantitytoCharge},  
  "resourceUri":  
    "/subscriptions/{subscriptionId}  
    /resourceGroups/{maResourceGroupName}  
    /providers/Microsoft.Solutions/applications/{maName}",  
  "dimension": "{dimensionName}",  
  "planId": "{planId}"  
}
```

Single dimension API POST payload

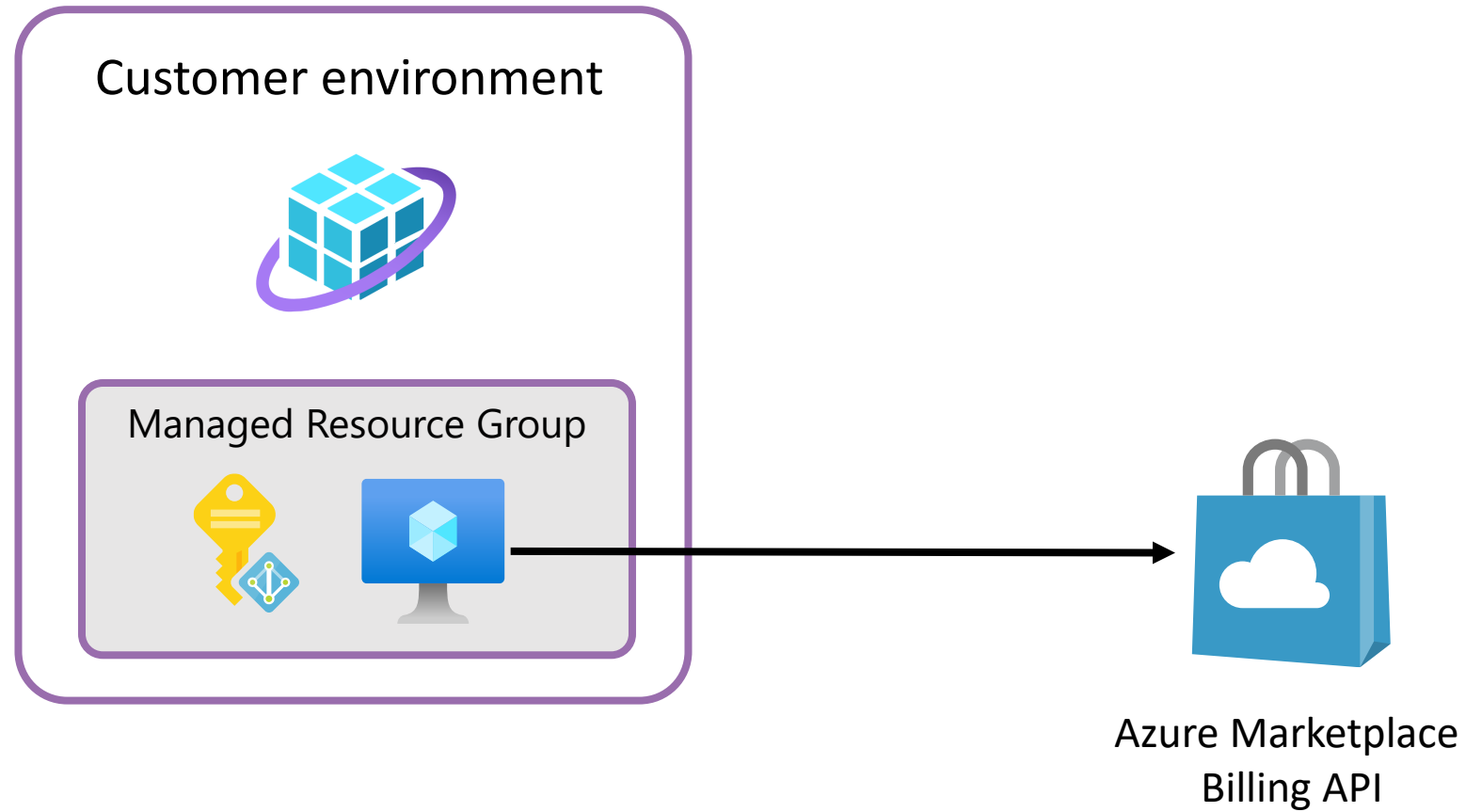
```
{  
  "effectiveStartTime": "2018-12-01T08:30:14",  
  "quantity": 10  
  "resourceUri":  
    "/subscriptions/bf7adf12-c3a8-426c-9976-29f145eba70z  
    /resourceGroups/myMAREsouceGroup  
    /providers/Microsoft.Solutions/applications/myAppName",  
  "dimension": "scan-doc",  
  "planId": "silver-plan"  
}
```

Demo



Calling the metered billing API

Demo scenario



Summary

Direct reporting model

Centralized reporting model

Working with the metered
billing API

